

Hygiene Technology 2016

Your advantages:

Individual project support

- ✓ One contact person for all questions

Service hotline

- ✓ Fast and competent help by our technicians

In-company installation service

- ✓ Competent and professional installation including start-up

Factory service

- ✓ Turn-key installation through own employees

CAD

- ✓ Planning security due to 2D + 3D visualisations

High spare part availability

- ✓ Reduced downtime

Global distribution and service structure

- ✓ Worldwide expert advice and service availability

Order-related manufacture by in-house CAD

- ✓ Customised manufacture can be easily and quickly implemented.

Bank on our professionalism.



Contents

Hand cleaning

...Pages 4-5, 10



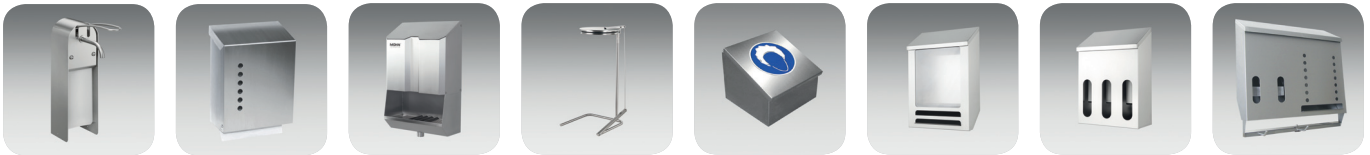
Hand disinfection

...Pages 12-15



Dispenser & accessories

...Pages 6-9



Sole and boot cleaning

...Pages 16-18, 32



Compact hygiene solutions

...Pages 10-13



Hygiene control points & accessories

...Pages 20-27, 33-34



Turnstiles / handrails / gates

...Pages 28-31



Hand wash basin, type HWB

of rustproof stainless steel 1.4301

- Knee or sensor operation; also available with anti-legionella bacteria flushing!
- Hygienic design
- Stainless steel outlet tap including water-saving tap aerator
- 24 V DC technology, Sensor reach adjustable
- Proportional mixing valve including check valve
- Wall mounting rail

Type	Design	Dimensions W x D x H mm	Article no.
HWB-SR 1	Sensor	555 x 455 x 665	12.00.01.94
HWB-WF 1	Sensor and anti-legionella bacteria flushing	555 x 455 x 665	12.00.00.85
HWB-KV 1	Knee operation	555 x 455 x 665	12.00.00.98
W.-connection: 1/2" - cold + warm water, supply pressure: 2.5 - 6 bar			
Technical data: 230 V, 50-60 Hz, 16 A; drain: 1 1/2"			



Sensor operation

Options:

- Reduced depth: 350 mm, **Article no. 12.00.00.02**
- Rear wall panelling, **Article no. 12.00.00.36**
- Medium cover facing, **Article no. 12.00.00.09**
- Medium supply „Water“ from top, **Article no. 12.00.00.37**
- Medium supply „Power“ from top, **Article no. 12.00.00.32**
- Flow water heater (3.5 kW), **Article no. 12.00.00.80**
- Battery supply (6 V), **Article no. 11.00.00.99**
- Thermostat mixing valve with check valve, **Article no. 99.81.00.04**
- Siphon kit (PVC), drain, **Article no. 93.00.00.27**
- Siphon kit (V2A), drain, **Article no. 93.00.00.64**



Knee operation



Wall mounting frame:



Wall spacer (100 mm)

Art. No. 99.80.06.10

Foot frames / base structures:



Foot frame, type I

Art. No. 12.00.00.05



Foot frame, type II

Art. No. 12.00.00.13



Base cabinet with revolving door

Art. No. 12.00.00.07

Multiple hand wash basin, type WR

of rustproof stainless steel 1.4301

- Knee or sensor operation; also available with anti-legionella bacteria flushing!
- Hygienic design
- Stainless steel outlet tap, chrome-plated tap aerator
- 24 V DC technology
- Sensor reach adjustable
- Thermostat mixing valve including check valve
- Wall mounting rail



Sensor-operated multiple hand wash basin, type WR-SR 3

	Washbasins (total width)				
	Article No.				
Design	2 (W: 1055 mm)	3 (W: 1555 mm)	4 (W: 2055 mm)	5 (W: 2555 mm)	6 (W: 3055 mm)
Sensor	12.00.01.95	12.00.01.96	12.00.01.97	12.00.01.98	12.00.01.99
Sensor + Legionella	12.00.00.86	12.00.00.87	12.00.00.88	12.00.00.89	12.00.00.90
Knee	12.00.02.07	12.00.02.08	12.00.02.09	12.00.02.10	12.00.02.11
W.-connection:	3/4"	3/4"	3/4"	3/4"	3/4"
Technical data:	230 V, 50-60 Hz, control voltage: 24 V DC, fuse: 16 A; drain 1 1/2"				

Options:

- Reduced depth: 350 mm, **Article no. 12.00.00.02**
- Medium supply „Water“ from top, **Article no. 12.00.00.37**
- Medium supply „Power“ from top, **Article no. 12.00.00.32**
- Flow water heater (11 kW), **Article no. 12.00.00.83**
- Battery supply (6 V), each washbasin, **Article no. 11.00.00.99**
- Siphon kit (PVC), drain, **Article no. 93.00.00.27**
- Siphon kit (V2A), drain, **Article no. 93.00.00.64**



Fig.	Design	Washbasins / Article no.				
		2	3	4	5	6
1.	Wall spacer	99.80.06.11	99.80.06.12	99.80.06.13	99.80.06.14	99.80.06.15
2.	Medium facing	12.00.01.00	12.00.01.01	12.00.01.02	12.00.01.03	12.00.01.13
3.	Rear wall panelling (with stand-alone)	12.00.01.04	12.00.01.05	12.00.01.06	12.00.01.07	12.00.01.17
4.	Foot frame I	12.00.00.42	12.00.00.54	12.00.00.55	12.00.00.56	12.00.00.57
5.	Foot frame II	12.00.00.43	12.00.00.43	12.00.00.43	12.00.00.43	12.00.00.43
6.	Foot frame III	12.00.01.08	12.00.01.09	12.00.01.10	12.00.01.11	12.00.01.12
7.	Foot frame IV	99.80.00.23	99.80.00.23	99.80.00.23	99.80.00.23	99.80.00.23

Universal dispenser, type USP-O

of rustproof stainless steel 1.4301

- For soap or disinfectant
- Hygienic design
- Refillable reservoir (1000 ml)
- Long, stable lever for hygienic elbow operation
- Sticker „Disinfection“ + „Soap“; optional: Etched label, Article no. 90.00.00.95



Universal dispenser, type USP-E-VA

of rustproof stainless steel 1.4301

- For soap or disinfectant
- Refillable reservoir (900 ml)
- Contactless sensor operation
- Battery supply (3 x 1.5 V)
- Level glass gauge
- Lockable
- Etched label „Soap“ o. „Disinfection“, Article no. 90.00.00.95 (optional)



Type	Design	Dimensions W x D x H mm	Article no.
USP-O	Manual	93 x 100 x 330	18.00.00.15

Type	Design	Dimensions W x D x H mm	Article no.
USP-E-VA	Sensor operation	110 x 115 x 270	18.00.00.68

Towel dispenser, type HTSP-O

of rustproof stainless steel 1.4301

- Capacity: 400 folded paper towels
- Hygienic design
- Pitched roof
- Level glass gauge made of break-proof polycarbonate
- Lockable (optional)



Towel dispenser, type HTSP-E-VA

of rustproof stainless steel 1.4301

- Automatic paper towel dispenser (battery supply, 4 x 1.5 V)
- Contactless sensor operation
- Paper rolls with external take-off
- Paper rolls: W 200 x Ø 190 mm, Roll core: Minimum 38 mm
- Single-sheet dispensing
- Lockable housing



AKR-WOLF GmbH

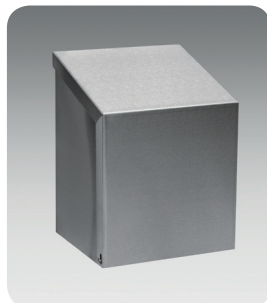
Type	Design	Dimensions W x D x H mm	Article no.
HTSP-O	Not lockable	275 x 135 x 355	18.00.00.01

Type	Design	Dimensions W x D x H mm	Article no.
HTSP-E-VA	Sensor operation	278 x 211 x 406	18.00.01.77

Roll box, type RB-E

of rustproof stainless steel 1.4301

- Hygienic design
- Pitched roof
- Paper rolls with internal take-off
- Paper rolls up to maximum Ø 260 mm
- Lockable (optional)



Dryrack Typ DR

of rustproof stainless steel 1.4301

- Robust frame for individual equipment with MOHN towel dispenser, roll box and waste paper basket.



Type	Design	Dimensions W x D x H mm	Article no.
RB-E	Not lockable	280 x 250 x 400	19.00.00.12

Type	Design	Dimensions W x D x H mm	Article no.
DR-I	Wall-mounted	245 x 75 x 1210	18.00.09.02
DR-II	HWB-mounting	245 x 25 x 1210	18.00.09.03

Waste paper baskets, type PK-D/ PK-E

of rustproof stainless steel 1.4301

- Stable industrial design
- Stainless steel-wire-mesh (PK-D)
- Stainless steel sheet (PK-E)
- PK-E: Inclined bottom with drain holes
- Wall bracket, **Article no. 18.00.09.97** (Optional)



Type	Capacity	Dimensions W x D x H mm	Article no.
PK-D 40	40 litres	350 x 250 x 400	18.00.00.28
PK-D 60	60 litres	410 x 270 x 580	18.00.00.62
PK-D 100	100 litres	420 x 345 x 750	18.00.00.63
PK-E 40	40 litres	335 x 255 x 450	18.00.01.24
PK-E 60	60 litres	410 x 270 x 580	18.00.01.25
PK-E 100	100 litres	400 x 340 x 700	18.00.01.26

Trash bag holder, type MSH-S

of rustproof stainless steel 1.4301

- Capacity: 110/ 120 litres Waste bags
- Cover opening by foot pedal
- Optional: Base plate for heavy filler



Type	Design	Dimensions W x D x H mm	Article no.
MSH-S I	Foot pedal	510 x 420 x 960	49.00.00.29
Base plate	---	Ø 400	49.00.01.33

Hand drier, type Jet II

of rustproof stainless steel 1.4301

- 2-hand heavy-duty hand drier, 3.2 kW
- Hygienic design
- Drying time, appr. 10 seconds
- Contactless sensor operation
- Splash water-proof design
- Wall-mounted design
- NW 40 drain socket, for ex. connection to the siphon of the sluice



Type	Design	Dimensions W x D x H mm	Article no.
Jet II	2-hand, electrical	400 x 205 x 650	90.00.00.76

Technical data: 230 V, 50 Hz; 3.2 kW; drain: DN 40

Stainless steel mirror, type ESP

of rustproof stainless steel 1.4301

- Ultrafinish surface
- Break-proof (IFS-conform)
- All sides chamfered
- Rear full-surface backed with Forex plate.
- Pre-drilled for wall mounting

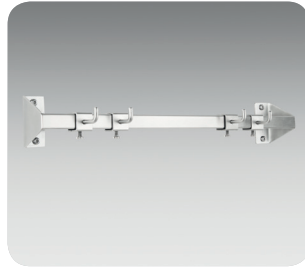


Type	Design	Dimensions W x H mm	Article no.
ESP I	With back plate	500 x 600	49.00.09.81
ESP II	With back plate	1000 x 600	49.00.09.82
ESP III	With back plate	1500 x 600	49.00.09.83
ESP-S	Screws	4,5 x 50, M3 IG	20.00.10.06
ESP-K	Clamps		20.00.10.09

Disposable apron dispenser, type ESS-1

of rustproof stainless steel 1.4301

- Hygienic design
- With hygienic wall bracket
- For disposable flat-pack aprons with tear-off edge
- Stable profile pipe, 4 sliding hooks

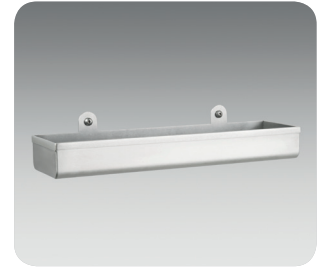


Type	Design	Dimensions W x D x H mm	Article no.
ESS-1	Wall-mounted	450 x 85 x 70	18.00.01.58

Disposable apron dispenser, type ESS-2

of rustproof stainless steel 1.4301

- Hygienic design
- With hygienic wall bracket
- For disposable aprons on roll with tear-off edge
- With rounded inner body including drain holes



Type	Design	Dimensions W x D x H mm	Article no.
ESS-2	Wall-mounted	400 x 100 x 50/ 80	18.00.01.59

Disposable protective goggle dispenser, type EBS

of rustproof stainless steel 1.4301

- For disposable full-view protective goggles in production areas
- Filling through cover in pitched roof design
- Cover with overhang => No risk of finger bruising
- Large withdrawal opening



Type	Design	Dimensions W x D x H mm	Article no.
EBS	Wall-mounted	200 x 170 x 450/ 550	18.00.01.53

Disposable overshoe dispenser, type EUS

of rustproof stainless steel 1.4301

- With large inner space for big stocks of overshoes
- Filling through cover in pitched roof design
- Cover with overhang => No risk of finger bruising
- Window for filling level gauge



Type	Design	Dimensions W x D x H mm	Article no.
EUS	Wall-mounted	400 x 170 x 450/ 550	18.00.01.51

Disposable ear plug dispenser, type EOS

of rustproof stainless steel 1.4301

- With large inner space for big stocks of ear plugs
- Filling through cover with pitched roof
- Cover with overhang => No risk of finger bruising
- Large withdrawal opening
- Front chute retaining the ear stops from falling out.



Type	Design	Dimensions W x D x H mm	Article no.
EOS	Wall-mounted	200 x 170 x 450/ 550	18.00.01.52

Utensils dispenser, type US

of rustproof stainless steel 1.4301

- With large inner space for hygienic storage
- Filling through cover with pitched roof
- Cover with overhang => No risk of finger bruising
- Large withdrawal opening
- Splash water-proof



Type	Design	Dimensions W x D x H mm	Article no.
US	Wall-mounted	300 x 280 x 150/ 250	18.00.00.08

Disposable hairnet / mask dispenser, type EMS

of rustproof stainless steel 1.4301

- For hairnets or mask
- With large inner space for big stocks
- Filling through cover with pitched roof
- Cover with overhang
=> No risk of finger bruising
- Large withdrawal opening



Type	Design	Dimensions W x D x H mm	Article no.
EMS	Wall-mounted	400 x 175 x 450/ 550	18.00.01.54

Disposable workcoat / overall dispenser EKS

of rustproof stainless steel 1.4301

- For visitor coats, overalls or surgeon hoods (Packing size up to W 250 x D 310 mm)
- Filling through cover with pitched roof
- Cover with overhang
=> No risk of finger bruising
- Large withdrawal opening



Type	Design	Dimensions W x D x H mm	Article no.
EKS	Wall-mounted	260 x 320 x 450/ 550	18.00.01.55

Disposable glove dispenser, type EHS-2

of rustproof stainless steel 1.4301

- Capacity: 2 cardboard boxes (Box size 210 x 120 x 60 mm)
- Spring-operated mechanism on filling opening
- Filling through cover in pitched roof design
- Cover with overhang
=> No risk of finger bruising



Type	Design	Dimensions W x D x H mm	Article no.
EHS-2	Wall-mounted	260 x 170 x 450/ 550	18.00.01.56

Disposable glove dispenser, type EHS-3

of rustproof stainless steel 1.4301

- Capacity: 3 cardboard boxes (Box size 210 x 120 x 60 mm)
- Spring-operated mechanism on filling opening
- Filling through cover in pitched roof design
- Cover with overhang
=> No risk of finger bruising



Type	Design	Dimensions W x D x H mm	Article no.
EHS-3	Wall-mounted	390 x 170 x 450/ 550	18.00.01.57

Multidispenser, type MUS

of rustproof stainless steel 1.4301

- Capacity: 2x gloves and 1x hairnet / mask
- Filling through cover with pitched roof
- Cover with overhang
=> No risk of finger bruising
- With or without hook board for disposable aprons



Type	Design	Dimensions W x D x H mm	Article no.
MUS-I	Without hook board	600 x 170 x 400/ 450	18.00.00.10
MUS-II	With hook board	600 x 170 x 500/ 550	18.00.01.16

Glove dispenser, type HSS

of rustproof stainless steel 1.4301

- Capacity: 1 or 3 cardboard boxes (Box size, max. 255 x 135 x 74 mm)
- For wall mounting
- Sheet-metal or wire-mesh design
- Other capacities on request!



Type	Capacity	Dimensions W x D x H mm	Article no.
HSS-I	1 cardboard box	260 x 140 x 78	18.00.00.48
HSS-III	3 cardboard boxes	280 x 105 x 330	18.00.00.76

Hygiene wall, type HW-S

of rustproof stainless steel 1.4301

Complete unit consisting of:

- 1 Hand basin (HWB-S 47), sensor operation
- 2 Universal dispenser (USP-O) for soap + disinfectant
- 1 Towel dispenser (HTSP-O)
- 1 Wire-meshwaste paper basket (PK-D 40)
- Rear with pitched roof (hygienic design) including hook rail
- Mirror-inverted design available (arrangement on request)
- Optionally with HWB knee operation, **Article no. 11.00.01.18**

Type	Design	Dimensions W x D x H mm	Article no.
HW-S	Sensor HWB	760 x 500 x 1100	11.00.01.19
Technical data: 230 V, 50-60 Hz, 24 V DC; 1/2" - KW/ WW; drain: 1 1/2"			



Hygiene wall, type HW-J

of rustproof stainless steel 1.4301

Complete unit consisting of:

- 1 Hand basin (HWB-S 47), sensor operation
- 2 Universal dispenser (USP-O) for soap + disinfectant
- Electric 2-hand heavy-duty hand drier, type Jet II
- Rear with pitched roof (hygienic design) including hook rail
- Mirror-inverted design available (arrangement on request)
- Optional: V2A-Tubing with siphon Jet II to the HWB, **Article no. 93.00.00.65**
- Optionally with HWB-knee operation, **Article no. 11.00.00.41**

Type	Design	Dimensions W x D x H mm	Article no.
HW-J	Sensor HWB+Jet II	1000 x 500 x 1100	11.00.00.42
Technical data: 230 V, 50-60 Hz, 24 V DC, 3.2 kW; 1/2" - KW/ WW; drain: 1 1/2"			



Hygiene wall, type HW-I

of rustproof stainless steel 1.4301

Complete unit consisting of:

- 1 Hand basin (HWB-S 40), sensor operation
- 2 Universal dispenser (USP-O) for soap + disinfectant
- 1 Towel dispenser (HTSP-O)
- 1 Wire-mesh waste paper basket (PK-D 40)
- Sole cleaning machine (Sole-Master)
- Rear with pitched roof (hygienic design) including foot frame
- Mirror-inverted design available (arrangement on request)

Type	Design	Dimensions W x D x H mm	Article no.
HW-I	Floor model	1570 x 590 x 1500	11.00.00.19
Technical data: 230 V, 50-60 Hz; 0.2 kW, 3/4" - MW / 1/2" - WWW/ KW; drain: 2"			



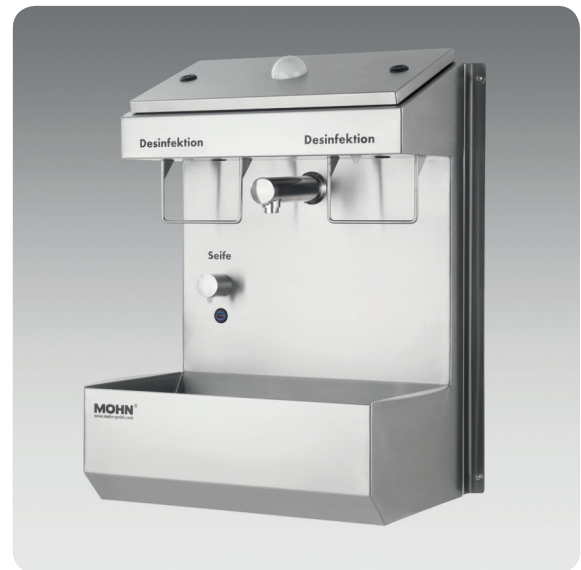
Cleancenter Typ CC-II

of rustproof stainless steel 1.4301

For controlled cleaning + disinfection of the hands through forced sequence by integrated controller. Potential-free contact for controlling of, for ex. rapid-action gate, door etc.

- Hygienic design
- Wall-mounted; optionally with stand foot, **Article no. 12.00.00.13**
- Contactless fittings for water, soap and disinfectant
- Integrated 2-hand-automatic disinfectant dispenser
- Multi-LED signal display
- 2 can holders for soap & disinfectant

Type	Design	Dimensions W x D x H mm	Article no.
CC-II	Soap + water + disinfectant	500 x 355 x 725	12.00.00.20
Technical data: 230 V, 50-60 Hz, 24 V DC; 1/2" - KW/ WW; drain: 1 1/2"			



Euroclean-Complete Typ EC

of rustproof stainless steel 1.4301

The compact hygiene complete solution for craft, low-frequented side entrances or technical departments

- Optionally with base frame or wall-mounted
- Sensor-operated hand basin
- 2 Universal dispensers for disinfectant and soap
- Towel dispenser (HTSP-O) + waste paper basket (PK-D 40)
- Sole cleaning machine, typeSole-Master
- Can holder for wall mounting

Type	Design	Dimensions W x D x H mm	Article no.
EC-S	Floor model	684 x 453 x 1600	11.00.00.22
EC-W	Wall-mounted	684 x 400 x 1500	11.00.00.23
Technical data: 230 V, 50-60 Hz, 0.2 kW; water: 1/2"; drain: 2"			



Hygienic station, type HS

of rustproof stainless steel 1.4301

The compact stationary hygienic complete solution for optimum cleaning + disinfection of hands and soles by forced control or forced sequence control. Potential-free contact for controlling of, for ex. rapid-action gate, door etc..

- 2-Hand automatic disinfectant dispenser
- Contactless fittings for soap, water, disinfection + sole cleaning
- All running times and dosing rates adjustable
- Brush rolls easily removable without tool.
- Multi-LED signal display
- Towel dispenser (HTSP-O), waste paper basket (PK-D 40) + can holder

Type	Design	Dimensions W x D x H mm	Article no.
HS	Floor model	1025 x 850/ 1155 x 1995	10.00.00.22
Technical data: 3x 400 V, 50-60 Hz; 24 V DC; 0.6 kW; 3/4" - MW; drain: 2"			



Automatic hand hygiene dispenser Soap /Desi-Star Ecoline

of rustproof stainless steel 1.4301

For controlled 2-hand application by integrated controller. Potential-free contact for controlling of, for ex. door

- Hygienic design
- Wall-mounted; optionally with foot frame, Article no. 10.00.00.77
- Tamper-proof 2-hand sensor control
- Multi-LED signal display
- Including can holder

Type	Design	Dimensions W x D x H mm	Article no.
Desi-Star	Disinfection	400 x 345 x 575	01.00.02.20
Soap-Star	Soap	400 x 345 x 575	01.00.92.20
Technical data: 230 V, 50-60 Hz, 0.2 kW 24 V DC			



Hand hygiene station Cleandry, type CDR

of rustproof stainless steel 1.4301

For controlled cleaning + drying of the hands through forced sequence by integrated controller. Potential-free contact for controlling of, for ex. rapid-action gate, door etc.

- Hygienic design
- Wall-mounted; optionally with foot frame, Article no. 10.00.00.77
- Sluice with contactless fittings for water and soap
- High-speed hand drier, 3.2 kW
- Multi-LED signal display
- Including can holder

Type	Design	Dimensions W x D x H mm	Article no.
CDR-R	Right-hand	1053 x 375 x 800	12.00.22.26
CDR-L	Left-hand	1053 x 375 x 800	12.00.22.27
Technical data: 230 V, 50-60 Hz, 3.4 kW; water: 3/4"-MW; drain: 1 1/2"			



Left-hand design

Clean-Station TOP-I Ecoline

of rustproof stainless steel 1.4301

For controlled cleaning, drying + disinfection of the hands through forced sequence by integrated controller. Potential-free contact for controlling of, for ex. rapid-action gate, door etc.

- Hygienic design
- Wall-mounted; optionally with foot frame, Article no. 10.00.00.77
- Sluice with contactless fittings for water and soap
- High-speed hand drier, 3.2 kW
- Sensor-controlled 2-hand automatic disinfectant dispenser
- Multi-LED signal display

Type	Design	Dimensions W x D x H mm	Article no.
TOP I-R	Right-hand	1553 x 375 x 800	12.00.22.24
TOP I-L	Left-hand	1553 x 375 x 800	12.00.22.25
Technical data: 230 V, 50-60 Hz, 3.4 kW; water: 3/4"-MW; drain: 1 1/2"			



Left-hand design

Clean-Station TOP-II Ecoline

of rustproof stainless steel 1.4301

For controlled cleaning, drying + disinfection of the hands through forced sequence by integrated controller with person separation. Potential-free contact for controlling of, for ex. rapid-action gate, door etc.

- Wall-mounted; optionally with foot frame, Article no. 10.00.00.77
- Sluice with contactless fittings for water and soap
- High-speed hand drier, 3.2 kW
- Sensor-controlled 2-hand automatic disinfectant dispenser / electric Turnstile

Type	Design	Dimensions W x D x H mm	Article no.
TOP II-R	Right-hand	1553 x 864 x 800	12.00.22.23
TOP II-L	Left-hand	1553 x 864 x 800	12.00.22.21
Technical data: 230 V, 50-60 Hz, 3.4 kW; water: 3/4"-MW; drain: 2"			



Right-hand design

Clean-Station Typ CS Ecoline

of rustproof stainless steel 1.4301

For controlled cleaning, drying + disinfection of the hands through forced sequence by integrated controller with person separation. Potential-free contact for controlling of, for ex. rapid-action gate, door etc.

- Wall-mounted; optionally with foot frame, Article no. 10.00.00.77
- Sluice with contactless fittings for water and soap
- Waste paper basket 40 litres (PK-D) & towel dispenser (HTSP-O)
- Sensor-controlled 2-hand automatic disinfectant dispenser / electric Turnstile

Type	Design	Dimensions W x D x H mm	Article no.
CS-E R	Right-hand	1153 x 375/ 864 x 575	12.00.22.22
CS-E L	Left-hand	1153 x 375/ 864 x 575	12.00.22.33
Technical data: 230 V, 50-60 Hz, 24 V DC; water: 3/4"-MW; drain: 2"			



Right-hand design

Clean-Station Typ CS-Highline

of rustproof stainless steel 1.4301

For controlled cleaning, drying + disinfection of the hands through forced sequence by integrated controller with person separation. Potential-free contact for controlling of, for ex. rapid-action gate, door etc.

- Wall-mounted; optionally with foot frame, Article no. 10.00.00.77
- Sluice with contactless fittings for water and soap
- Waste paper basket 40 litres (PK-D) & towel dispenser (HTSP-O)
- 2-Hand automatic disinfection dispenser including vandalism-proof turnstile (10 years guarantee for the turnstile mechanism!)

Type	Design	Dimensions W x D x H mm	Article no.
CS-H R	Right-hand	1453 x 345/ 965 x 600	12.00.22.35
CS-H L	Left-hand	1453 x 345/ 965 x 600	12.00.22.36
Technical data: 230 V, 50-60 Hz, 24 V DC; water: 3/4"-MW; drain: 2"			



Left-hand design

Soap / Desi-Control Highline and Ecoline

of rustproof stainless steel 1.4301

Automatic soap / disinfectant dispenser with turnstile.

Person separation: Approval after terminated medium application only!

- Highline version with vandalism-proof turnstile (10 years guarantee)*
- Ecoline version with stable turnstile (2 years guarantee)*
- Hygienic design
- Wall-mounted; optionally with foot frame, **Article no. 10.00.00.77**
- Design with left-hand or right-hand passage direction available
- Tamper-proof sensor technology
- Way back optionally blocked, idle run or electrically released (option)
- Dosage of the application quantity adjustable
- Potential-free contact available, for ex. for time-recording system
- Optical empty-can message by multi-LED (Highline)
- Can holder
- Optionally with two-arm rotation lock, see page 29

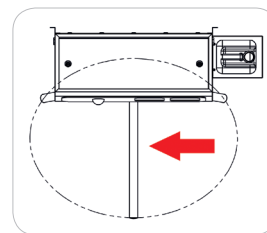


Highline, left-hand design

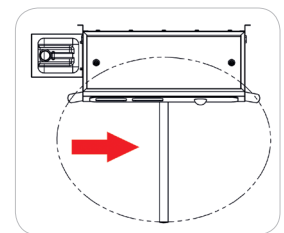
Soap-/ Desi-Control			
	Type	Dimensions W x D x H mm	Article no.
Highline	Soap-Control	1053 x 935 x 600	10.00.92.22
	Desi-Control	1053 x 935 x 600	10.00.12.22
Ecoline	Soap-Control	653 x 875 x 575	12.00.92.22
	Desi-Control	653 x 875 x 575	12.00.12.22
Technical data: 230 V, 50-60 Hz, control voltage 24 V DC, power: 0.2 kW			

*for the turnstile mechanism!

Passage directions:



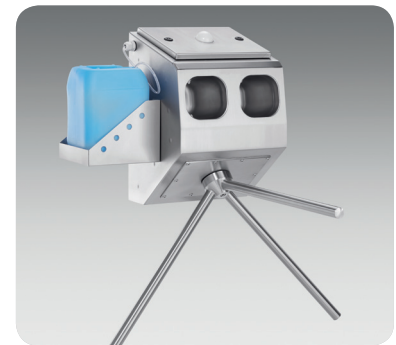
Right-hand design



Left-hand design

Options:

- Way-back release (electric) by for ex. mushroom-head button, transponder etc. on request.
- Document tray, type I (wire), **Article no. 18.00.00.92**, see page 34
- Document tray, type II (sheet metal), **Article no. 18.00.00.93**, see page 34
- Handrail for forced guidance of persons, L: 1000 mm, see page 30 (Design RW blocked / electric)
- Handrail for forced guidance of persons including chicanes, L: 1000 mm, see page 30 (Design RW idle run)
- Optical empty-can message by multi-LED (Ecoline), **Article .-no. 99.87.00.34**



Ecoline



Duo-Soap-/ Desi-Control Highline

of rustproof stainless steel 1.4301

2-lane automatic soap / disinfection dispenser with turnstile.

Person separation: Approval after terminated medium application only!

- Each lane separately controlled!
- Hygienic design
- Floor version
- Tamper-proof sensor technology
- Way back optionally blocked, idle run or electrically released (option)
- Dosage of the application quantity adjustable
- Potential-free contact for each lane available, (for ex. for time-recording system)
- Optical empty-can message by multi-LED
- 2 can holders
- Optional: 1-lane entry only / 1-lane exit only, **Article no. 10.00.32.30**
(1-lane soap or disinfection application not available)
- Exit turnstile: Mechanical, optionally electric, **Article no. 99.90.02.50**
- Optionally with two-arm rotation lock, see page 29



Duo-Desi-Control Highline

Duo-Soap-/ Desi-Control Highline			
Type	Design	Dimensions W x D x H mm	Article no.
Duo-Soap	2-lane hand soaping with turnstile	1608 x 1053 x 1445	10.00.32.22
Duo-Desi	2-lane hand disinfection with turnstile	1608 x 1053 x 1445	10.00.42.22
Technical data: 230 V, 50-60 Hz, control voltage 24 V DC; power: 0.4 kW			



Document tray, type I



Document tray, type II

Options:

- Way-back release (electric) of the turnstile by for ex. mushroom-head button, transponder etc. on request.
- Document tray, type I (wire), **Article no. 18.00.00.92**, see page 34
- Document tray, type II (sheet metal), **Article no. 18.00.00.93**, see page 34
- Handrail for forced guidance of persons, L: 1000 mm (design RW blocked / electric), see page 30
- Handrail for forced guidance of persons including chicanes, L: 1000 mm (design RW idle run), see page 30



Disinfection mat, type DM

Bottom: Polypropylene / Top surface: Needle felt

Simple, professional solution for safe and hygienic access to food-processing plants, canteens, pharmaceutical and bio-chemical enterprises etc.

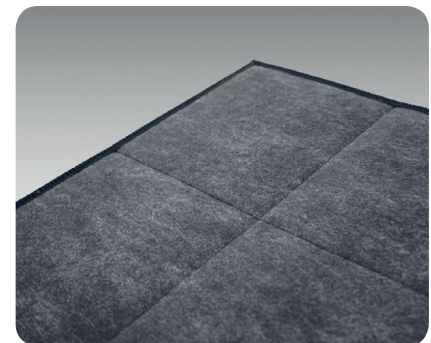
- 6 different standard sizes (special sizes on request)
- 2 types: Walkable (standard) or passable (quilted in squares)
- Durable and tough
- Individual lettering banners and logo embroideries on request!

Disinfection mats quilted in squares are suited for the disinfection of passing-through rollers of trolleys, carts, lift trucks etc. passing over.



Walkable disinfection mat

Disinfection mats			
	Type	Dimensions W x D x H mm	Article no.
Walkable (standard)	DM-I	900 x 600 x 15	99.10.00.77
	DM-II	900 x 1200 x 15	99.10.00.81
	DM-II	900 x 1500 x 15	99.10.00.82
	DM-IV	900 x 1800 x 15	99.10.00.83
	DM-V	900 x 2400 x 15	99.10.00.85
	DM-VI	900 x 3000 x 15	99.10.00.84
Passable (quilted in squares)	DM-K I	900 x 600 x 15	99.10.01.77
	DM-K II	900 x 1200 x 15	99.10.01.81
	DM-K III	900 x 1500 x 15	99.10.01.82
	DM-K IV	900 x 1800 x 15	99.10.01.83
	DM-K V	900 x 2400 x 15	99.10.01.85
	DM-K VI	900 x 3000 x 15	99.10.01.84



Passable disinfection mat quilted in squares

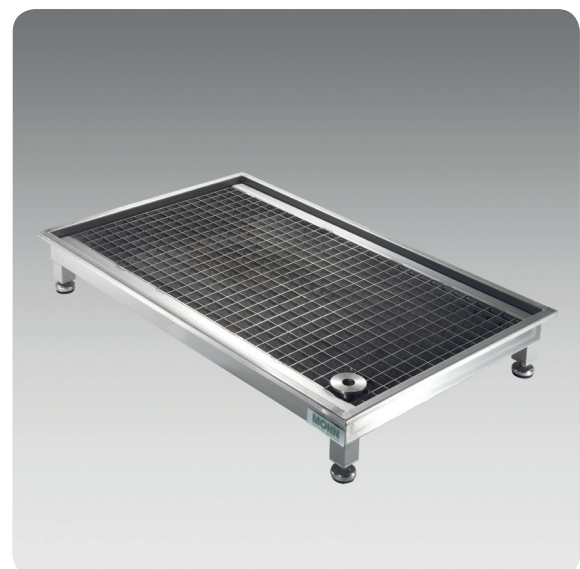
Walk-through-disinfection basin, type DDB-S

of rustproof stainless steel 1.4301

For controlled walk-through disinfection of the soles

- Floor version standing on vertically adjustable feet
- Stand pipe valve for drainage
- Removable anti-skid grid
- Optionally available as built-in version, see page 32
- Optionally with dosing station, see page 32

Type	Design	Dimensions W x D x H mm	Article no.
DDB-S I	Floor version	1100 x 700 x 180	65.00.00.01
DDB-S II	Floor version	550 x 700 x 180	65.00.00.02
Technical data: Drain 2" (DN 50)			



Walkable disinfection basin

Sole cleaning machine, type Sole-Master

of rustproof stainless steel 1.4301

- Hygienic design
- Adjustable dosage
- Start of the brush roll rotation by manual button
- Wall-mounted; optionally with foot frame (Highline), **Article no.**

49.10.01.05

- Integrated can holder (Highline)
- Highline: 2 additional lateral rotary-disk brushes for optimum cleaning of the sole edges and upper leather

Sole-Master			
	Design	Dimensions W x D x H mm	Article no.
Highline	Wall-mounted	715 x 410 x 1025	10.00.00.24
Ecoline	Floor model	440 x 540 x 1025	10.00.00.12
Technical data: 230 V, 50-60 Hz; 0.2 kW, 3/4" - MW; drain: 1 1/2"			



Highline

Ecoline

Boot cleaning machine, type Boot-Master

of rustproof stainless steel 1.4301

- Hygienic design
- Adjustable dosage
- Start of the brush roll rotation by manual button
- Integrated can holder (Highline)
- Highline: 1 horizontal and 2 vertical brush rolls
- Ecoline: 1 horizontal brush roll + water-flown hand brush for manual boot leg cleaning.

Boot-Master			
	Design	Dimensions W x D x H mm	Article no.
Highline	3x 400 V	860 x 800 x 1150	10.00.10.00
Ecoline	230 V	600 x 540 x 1025	10.00.00.13
Technical data: 50-60 Hz; 0.75 or 0.2 kW, 3/4" - MW; drain: 1 1/2"			



Highline

Ecoline

Sole, boot and apron cleaning stations



Type STWA-I, Article no. 16.00.00.09



Type STWA-II, Article no. 16.10.00.00
with integrated sole cleaning machine



Type STWA-III, Article no. 16.10.00.01
with integrated boot cleaning machine

Walk-through sole cleaning machine Sole-Star

of rustproof stainless steel 1.4301

For forcibly guided, walk-through cleaning and disinfection of the soles.

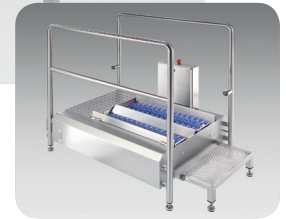
- Sensor-controlled brush roll rotation for both ways
- Brush rolls removable without tool
- Adjustable dosage
- Also as dry version available (for ex. bakery industry)
- Highline: With lateral entry protection

Solestar			Highline	Ecoline
Type	Brush length	Dimensions W x D x H mm	Article no.	Article no.
800	400 mm	860 x 1410 x 1300	10.00.00.20	10.00.00.50
1100	700 mm	860 x 1710 x 1300	10.00.00.30	10.00.00.60
1500	1100 mm	860 x 2110 x 1300	10.00.00.01	10.00.00.70
2000	1600 mm	860 x 2610 x 1300	10.00.00.16	10.00.00.00
Technical data: 3x 400 V, 50-60 Hz; 16 A; 0,5 kW, 3/4" - MW; drain: 2"				

Option: Lateral entry or exit, Article no. 10.00.00.86



Highline



Ecoline

Walk-through boot cleaning machine Boot-Star I

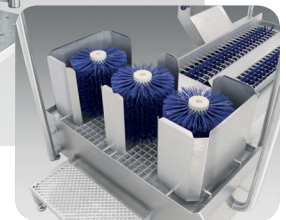
of rustproof stainless steel 1.4301

For forcibly guided, walk-through cleaning and disinfection of the soles and boot legs.

- 3 vertical bootleg cleaning brushes
- 2 horizontal brush rolls (Boot-Star I only)
- Brush rolls removable without tool
- Adjustable dosage
- Brush roll rotation by manually excited sensor

Type	Sole brushes	Dimensions W x D x H mm	Article no.
Boot-Star I	Yes	1245 x 1360 x 1295	10.00.10.01
Boot-Star I-M*	No	1245 x 750 x 1295	10.00.10.04
Technical data: 3x 400 V, 50-60 Hz; 1,9 kW; 3/4" - MW; drain: 2"			

*Modular to complete existing machines (without sole cleaning brushes)



Walk-through boot cleaning machine Boot-Star II

of rustproof stainless steel 1.4301

For forcibly guided, walk-through cleaning and disinfection of the soles and boot legs.

- 4 horizontal, tilted leg cleaning brushes
- 2 horizontal brush rolls, L: 1100 mm
- Brush rolls removable without tool
- Adjustable dosage
- Sensor-controlled brush roll rotation for both ways

Type	Design	Dimensions W x D x H mm	Article no.
Boot-Star II	6 brushes	1175 x 1500/ 2110 x 1250	10.00.01.70
Technical data: 3x 400 V, 50-60 Hz; 1,2 kW; 3/4" - MW; drain: 2"			





Type Control-Star see page 22

Hygiene control point Clean-Check Highline and Ecoline

of rustproof stainless steel 1.4301

1-lane, forcibly guided disinfection of the soles & hands.

Person separation: Approval after terminated medium application only!

- Highline version with vandalism-proof turnstile (10 years guarantee)*
- Ecoline version with stable turnstile (2 years guarantee)*
- Hygienic design
- Design with left-hand or right-hand passage direction available.
- 2-hand automatic disinfection dispenser including tamper-proof sensorics
- Way back optionally blocked, idle run or electrically released (option)
- Sensor-controlled brush roll rotation for both ways
- Brush rolls removable without tool
- Dosage of the application quantity adjustable
- Potential-free contact available, for ex. for time-recording system
- Optical empty-can message by multi-LED (Highline)
- Including can holder
- Also as dry version available (for ex. bakery industry)



Highline, left-hand design

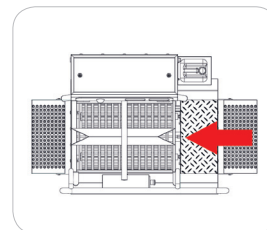
Hygiene control point Clean-Check				
	Type	Brush length	Dimensions W x D x H mm	Article no.
Highline	800	400 mm	1050 x 1410 x 1785	11.00.00.17
	1100	700 mm	1050 x 1710 x 1785	11.00.00.09
	1500	1100 mm	1050 x 2110 x 1785	10.00.00.18
	2000	1600 mm	1050 x 2610 x 1785	10.00.00.15
Ecoline	800	400 mm	975 x 1410 x 1785	11.00.00.20
	1100	700 mm	975 x 1710 x 1785	11.00.00.30
	1500	1100 mm	975 x 2110 x 1785	11.00.00.40
	2000	1600 mm	975 x 2610 x 1785	11.00.00.50
Technical data: 3x 400 V, 50-60 Hz; 0.6 kW; 3/4" - MW; drain: 2"				

*for the turnstile mechanism!

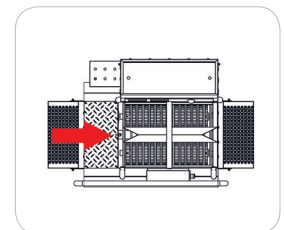
Options:

- Boot cleaning module, Boot-Star I-M with bypass for persons wearing clogs, see page 18
- Way-back release (electric) of the turnstile by for ex. mushroom-head button, transponder etc. on request.
- Lateral entry or exit, **Article no. 10.00.00.86**
- Document tray, type I (wire), **Article no. 18.00.00.92**, see page 34
- Document tray, type II (sheet metal), **Article no. 18.00.00.93**, see page 34
- Disinfection bath + drip tray, instead of brush rolls (type Desi-Check) on request
- 2-hand soaping instead of hand disinfection, **Article no. 10.00.00.92**
- Optical empty-can message by multi-LED (Ecoline), **Article .-no. 99.87.00.34**

Walk-through directions:



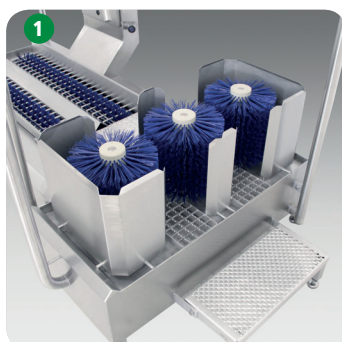
Right-hand design



Left-hand design



Ecoline



Clean-Check including boot cleaning module



Design with disinfection bath



Lateral exit

Hygiene control point Duo-Clean-Check Highline

of rustproof stainless steel 1.4301

2-lane, forcibly guided disinfection of the soles & hands.

Person separation: Approval after terminated medium application only!

- Each lane separately controlled!
- Hygienic design
- 2-hand automatic disinfection dispenser including tamper-proof sensorics
- Way back optionally blocked, idle run or electrically released (option)
- Sensor-controlled brush roll rotation for both ways
- Brush rolls removable without tool
- Dosage of the application quantity adjustable
- Potential-free contact for each lane available, for ex. for time-recording system
- Optical empty-can message by multi-LED
- Including can holders
- Optional: 1-lane entry only / 1-lane exit only, **Article no. 10.00.32.30**
(1-lane soap or disinfection application not available)
- Exit turnstile: Mechanical, optionally electric, **Article no. 99.90.02.50**

Duo-Clean-Check Highline (2 lanes)			
Type	Brush length	Dimensions W x D x H mm	Article no.
1500	1100 mm	1890 x 2110 x 1850	10.00.00.90
2000	1600 mm	1890 x 2610 x 1850	10.00.00.91
Technical data: 3x 400 V, 50-60 Hz; 1.25 kW; 3/4" - MW; drain: 2x 2"			

Options:

- Boot cleaning module, Boot-Star I-module with bypass for persons wearing clogs including platform, see page 18
- Way-back release (electric) of the turnstile by for ex. mushroom-head button, transponder etc. on request.
- Document tray, type I (wire), **Article no. 18.00.00.92**, see page 34
- Document tray, type II (sheet metal), **Article no. 18.00.00.93**, see page 34
- Disinfection bath + drip tray, instead of brush rolls (type Duo-Desi-Check) for each lane, on request
- 2-hand soaping instead of hand disinfection, **Article no. 10.00.00.92**



Hygiene control point Duo-Clean-Check Highline



Hygiene control point Control-Star

of rustproof stainless steel 1.4301

2-lane, forcibly guided disinfection of the soles & hands at highly frequented production entries. Separate entry and exit lanes!

Person separation: Approval after terminated medium application only!

- Highline version with vandalism-proof turnstile (10 years guarantee)*
- Ecoline version with stable turnstile (2 years guarantee)*
- Hygienic design
- At the entry side, optionally with brush roll module instead of walk-through disinfection basin and drip tray, see options.
- Brush rolls easily removable without tool
- Brush roll length 1600 mm (Highline) or 1100 mm (Ecoline)
- 2-hand automatic disinfection dispenser including tamper-proof sensorics
- Dosage of the application quantity adjustable
- Sensor-controlled brush roll rotation
- Disinfection basin with time-controlled cleaning agent supply
- Potential-free contact available, for ex. for time-recording system
- Optical empty-can message by multi-LED (Highline)



Highline 2000 D/ B



Ecoline 1500 D/B

Hygiene control point Control-Star (2 lanes)				
	Type	Design	Dimensions W x D x H mm	Article no.
Highline	2000-D/B	Entry: Disinfection + ATZ / exit: Brushes	1710 x 2610 x 1680	10.00.01.00
Ecoline	1500-D/B	Entry: Disinfection + ATZ / exit: Brushes	1710 x 2110 x 1785	10.00.09.00
Technical data: 3x 400 V, 50-60 Hz; 1.25 -1.5 kW; 3/4" - MW; drain: 2x 2"				

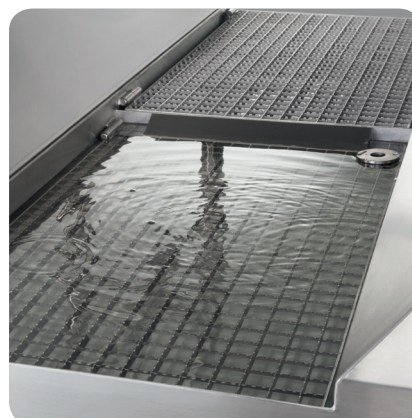
*for the turnstile mechanism!

Options:

- Boot cleaning module, Boot-Star I-module with bypass for persons wearing clogs including platform, see page 18
- Way-back release (electric) of the turnstile by for ex. mushroom-head button, transponder etc. on request.
- Knife basket chute for entry lane, **Article no. 99.80.01.41**
- Document tray, type I (wire), **Article no. 18.00.00.92**, see page 34
- Document tray, type II (sheet metal), **Article no. 18.00.00.93**, see page 34
- Brush roll module on the entry lane instead of disinfection bath (Ecoline), **Article no. 10.00.01.23**
- Brush roll module on the entry lane instead of disinfection bath (Highline), **Article no. 10.00.01.22**
- Handrails and gates, see page 30 + 31



Praxisfoto Highline



Detail of the disinfection bath



Knife basket chute



Hygiene control point Check-In-Station II Highline

of rustproof stainless steel 1.4301

Compact 1-lane walk-through hygiene complete solution for forcibly guided

cleaning and disinfection of the soles & hands.

Person separation: Approval after terminated medium application only!

- Highline version with vandalism-proof turnstile (10 years guarantee)*
- Hygienic design
- Design with left-hand or right-hand passage direction available.
- Sensor-operated hand basin with integrated 2-hand automatic soap dispenser.
- Folded papertowel dispenser and wire-mesh waste paper basket (40 litres)
- 2-hand automatic disinfection dispenser including tamper-proof sensorics
- Way back optionally blocked, idle run or electrically released (option)
- Sensor-controlled brush roll rotation for both ways
- Brush rolls removable without tool
- Dosage of the application quantity adjustable
- Potential-free contact available, for ex. for time-recording system
- Optical empty-can message by multi-LED
- Also as dry version available (for ex. bakery industry)



Check-In-Station II Highline, left-hand design

Hygiene control point Check-In-Station				
	Type	Brush length	Dimensions W x D x H mm	Article no.
Highline	II	700 mm	1100 x 2110 x 1910	10.00.01.32
Technical data: 3x 400 V, 50-60 Hz; 0.6 kW; 3/4" - MW; drain: 2"				

*for the turnstile mechanism!



Hand basin with integrated 2-hand automatic soap dispenser

Options:

- Boot cleaning module, Boot-Star I-module (with bypass for persons wearing clogs) including platform, see page 18
- Way-back release (electric) of the turnstile by for ex. mushroom-head button, transponder etc. on request.
- Stainless steel roll box RB-E-O instead of towel dispenser, **Article no. 19.00.00.12**
- Waste paper baskets of 60-100 litres made of wire mesh (PK-D) or special steel sheet (PK-E), see page 7
- Lateral entry or exit, **Article no. 10.00.00.86**
- Document tray, type I (wire), **Article no. 18.00.00.92**, see page 34
- Document tray, type II (sheet metal), **Article no. 18.00.00.93**, see page 34
- Disinfection bath + drip tray, instead of brush rolls on request



Disinfection basin with drip tray

Hygiene control point Check-In-Station II Ecoline

of rustproof stainless steel 1.4301

Compact 1-lane walk-through hygiene complete solution for forcibly guided cleaning and disinfection of the soles & hands.

Person separation: Approval after terminated medium application only!

- Ecoline version with stable turnstile (2 years guarantee)*
- Hygienic design
- Design with left-hand or right-hand passage direction available.
- Sensor-operated hand basin with integrated soap dispenser
- Contactless fittings for water and soap
- Folded papertowel dispenser and wire-mesh waste paper basket (40 litres)
- 2-hand automatic disinfection dispenser including tamper-proof sensorics
- Way back optionally blocked, idle run or electrically released (option)
- Sensor-controlled brush roll rotation for both ways
- Brush rolls removable without tool
- Dosage of the application quantity adjustable
- Potential-free contact available, for ex. for time-recording system
- Multi-LED signal display
- Also as dry version available (for ex. bakery industry)



Check-In-Station II Ecoline, right-hand design

Hygiene control point Check-In-Station II				
	Type	Brush length	Dimensions W x D x H mm	Article no.
Ecoline	800	400 mm	975 x 1410 x 1785	10.00.00.46
	1100	700 mm	975 x 1710 x 1785	10.00.00.44
	1500	1100 mm	975 x 2110 x 1785	10.00.00.42
	2000	1600 mm	975 x 2610 x 1785	10.00.00.48
Technical data: 3x 400 V, 50-60 Hz; 0.6 kW; 3/4" - MW; drain: 2"				

*for the turnstile mechanism!



Hand basin with soap dispenser

Options:

- Way-back release (electric) of the turnstile by for ex. mushroom-head button, transponder etc. on request.
- Stainless steelroll box RB-E-O instead of towel dispenser, **Article no. 19.00.00.12**
- Waste paper baskets of 60-100 litres made of wire mesh (PK-D) or special steel sheet (PK-E), see page 7
- Document tray, type I (wire), **Article no. 18.00.00.92**, see page 34
- Document tray, type II (sheet metal), **Article no. 18.00.00.93**, see page 34
- Disinfection bath + drip tray, instead of brush rolls on request
- Optical empty-can message by multi-LED (Ecoline), **Article .-no. 99.87.00.34**
- Lateral entry or exit, **Article no. 10.00.00.86**



Praxisfoto

Hygiene control point Check-In-Station III Highline

of rustproof stainless steel 1.4301

Compact 1-lane walk-through hygiene complete solution for forcibly guided cleaning and disinfection of the soles & hands.

High-speed hand drying: Within 10 seconds!

Person separation: Approval after terminated medium application only!

- Highline version with vandalism-proof turnstile (10 years guarantee)*
- Hygienic design
- Design with left-hand or right-hand passage direction available.
- Sensor-operated hand basin with integrated 2-hand automatic soap dispenser.
- High-speed hand drier, type Jet-II, 3.2 kW
- 2-hand automatic disinfection dispenser including tamper-proof sensorics
- Way back optionally blocked, idle run or electrically released (option)
- Sensor-controlled brush roll rotation for both ways
- Brush rolls removable without tool
- Dosage of the application quantity adjustable
- Potential-free contact available, for ex. for time-recording system
- Optical empty-can message by multi-LED
- Also as dry version available (for ex. bakery industry)



Check-In-Station III Highline, right-hand design



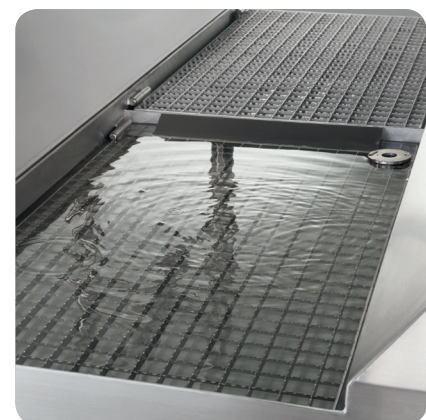
High-speed hand drier Jet-II

Hygiene control point Check-In-Station				
	Type	Brush length	Dimensions W x D x H mm	Article no.
Highline	III	700 mm	1100 x 2110 x 1910	10.00.01.28
Technical data: 3x 400 V, 50-60 Hz; 4.2 kW; 3/4" - MW; drain: 2"				

*for the turnstile mechanism!

Options:

- Boot cleaning module, Boot-Star I-module (with bypass for persons wearing clogs) including platform, see page 18
- Way-back release (electric) of the turnstile by for ex. mushroom-head button, transponder etc. on request.
- Lateral entry or exit, **Article no. 10.00.00.86**
- Document tray, type I (wire), **Article no. 18.00.00.92**, see page 34
- Document tray, type II (sheet metal), **Article no. 18.00.00.93**, see page 34
- Disinfection bath + drip tray, instead of brush rolls, on request



Detail of the disinfection basin

Hygiene control point Check-In-Station III Ecoline

of rustproof stainless steel 1.4301

Compact 1-lane walk-through hygiene complete solution for forcibly guided cleaning and disinfection of the soles & hands.

High-speed hand drying: Within 10 seconds!

Person separation: Approval after terminated medium application only!

- Ecoline version with stable turnstile (2 years guarantee)*
- Design with left-hand or right-hand passage direction available.
- Sensor-operated hand basin with integrated soap dispenser
- Contactless fittings for water and soap
- High-speed hand drier, 3.2 kW
- 2-hand automatic disinfection dispenser including tamper-proof sensorics
- Way back optionally blocked, idle run or electrically released (option)
- Sensor-controlled brush roll rotation for both ways
- Brush rolls removable without tool
- Dosage of the application quantity adjustable
- Potential-free contact available, for ex. for time-recording system
- Multi-LED signal display
- Also as dry version available (for ex. bakery industry)



Check-In-Station III Ecoline, left-hand design



Hand basin with soap dispenser

Hygiene control point Check-In-Station				
	Type	Brush length	Dimensions W x D x H mm	Article no.
Ecoline	III	700 mm	975 x 2110 x 2010	12.00.22.31
Technical data: 3x 400 V, 50-60 Hz; 4.2 kW; 3/4" - MW; drain: 2"				

*for the turnstile mechanism!

Options:

- Way-back release (electric) of the turnstile by for ex. mushroom-head button, transponder etc. on request.
- Boot cleaning module, Boot-Star I-module (with bypass for persons wearing clogs) including platform, see page 18
- Document tray, type I (wire), **Article no. 18.00.00.92**, see page 34
- Document tray, type II (sheet metal), **Article no. 18.00.00.93**, see page 34
- Disinfection bath + drip tray, instead of brush rolls, on request
- Optical empty-can message by multi-LED (Ecoline) **Article -no. 99.87.00.34**
- Lateral entry or exit, **Article no. 10.00.00.86**



Application photo with disinfection tray

Turnstile, type DK- „Highline“

of rustproof stainless steel 1.4301

- Hygienic design
- Highline version with vandalism-proof turnstile (10 years guarantee)*
- Wall-mounted, optionally with foot frame, **Article no. 10.00.00.77**
- Way back optionally blocked, idle run or electrically released (option)
- Potential-free contact available, for ex. for time-recording system (DK-E)
- Chicane and handrail, see page 30
- Optionally with two-arm turning lock, see page 29

Type	Design	Dimensions W x D x H mm	Article no.
DK-M High	Mechanical	800 x 345/ 935 x 600	99.80.01.30
DK-E High	Electrical	800 x 345/ 935 x 600	99.80.00.22
Technical data: 230 V, 50-60 Hz, 0.1 kW; 24 V DC			

*for the turnstile mechanism!



Highline

Turnstile, type DK-E „Ecoline“

of rustproof stainless steel 1.4301

- Hygienic design
- Ecoline version with stable turnstile (2 years guarantee)*
- Wall-mounted, optionally with foot frame, **Article no. 10.00.00.77**
- Way back optionally blocked or electrically released
- Potential-free contact available, for ex. for time-recording system
- Chicane and handrail, see page 30

Type	Design	Dimensions W x D x H mm	Article no.
DK-E Eco	Electrical	400 x 345/ 864 x 300	99.80.22.22
Technical data: 230 V, 50-60 Hz, 0.1 kW; 24 V DC			

*for the turnstile mechanism!



Ecoline

Portal turnstile, type PDK

of rustproof stainless steel 1.4301

High quality portal turnstile for person separation and access control.

- Turnstile column with 120° angular steps
- Hygienic design
- Suited for wet and outdoor areas
- Vandalism-proof turnstile assembly
- With power failure, freely rotating (type PDK-E-1)
- Potential-free contact available, for ex. for time-recording system (PDK-E)
- Way back electrically released (PDK-E-2), **Article no. 99.80.82.23**

Type	Design	Dimensions W x D x H mm	Article no.
PDK-M	Mechanical	1600 x 1260 x 2365	99.80.92.22
PDK-E-1	Electrical	1600 x 1260 x 2365	99.80.82.22
Technical data: 230 V, 50-60 Hz; temperature range: -25° C - + 40° C			



Two-arm turning lock, type DS-ZA

of rustproof stainless steel 1.4301

- High quality two-arm turning lock
- Electric design
- Optionally available for Soap or Desi-Control, as well as turnstile, DK-„Highline“
- In case of fire or panic, the turning lock moves to open position.
- Potential-free contact for coupling with, for ex. fire alarm system

Type	Design	Housing width Housing depth	Article no.
DS-ZA	Electrical	600 mm 445 mm	99.80.02.24

Total depth with turning lock: 1050 mm



Two-arm turning lock as option for Soap-Control Highline

Pass-through barrier, type DGS

of rustproof stainless steel 1.4301

- 3 different standard widths
- Surface holding magnet, pulse-controlled, for ex. from the fire alarm system

Pass-through barrier				
Type	Number of persons*	Escape width	Walkway width	Article no.
DGS	up to 5	875 mm	1570 mm	99.80.02.25
	up to 20	1000 mm	1695 mm	99.80.02.26
	up to 200	1200 mm	1895 mm	99.80.02.27

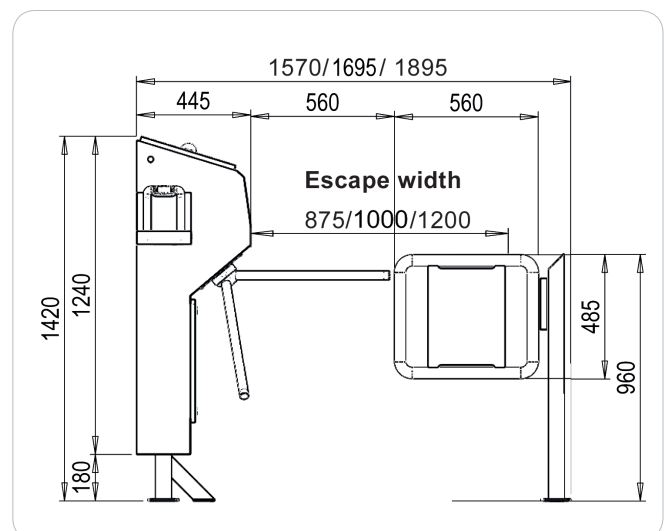
* According to german workplace provision for escape routes (ASR-A 2.3)



Optimum and narrowest escape routes!

Description:

Combining the two-arm turning lock, type DS-ZA, with the pass-through barrier, type DGS, escape routes from 875 mm to 1200 mm according to the workplace provision (ASR-A 2.3), can be realised for narrow hygiene walkways as well!



Handrail chicane, type G-S

of rustproof stainless steel 1.4301

For forced guidance of personnel on turnstiles!

- Hygienic, cleanly welded pipe profile construction
- Screw-on floor mounting flange
- Optionally with knee strap, vertical braces or splash guard
- 2 chicanes mounted on outer pipes for forced guidance of personnel
- Standard length: 1000 mm
- 2 different standard heights 960 and 1290 mm



G-S II 1290



G-S I 960

Handrail with chicane, length: 1000 mm			
	Height: 960 mm Article no.	Height: 1290 mm Article no.	Designs
G-S I	30.00.10.00	30.00.10.01	Knee strap
G-S II	30.00.10.02	30.00.10.03	Vertical braces
G-S III	30.00.10.04	30.00.10.05	Splash guard

Handrail, type G

of rustproof stainless steel 1.4301

- Hygienic, cleanly welded pipe profile construction
- Screw-on floor mounting flange
- Optionally with knee strap, vertical braces or splash guard
- Standard lengths: 1000 - 3000 mm (special lengths on request)
- 2 different standard heights 960 and 1290 mm
- On request, we manufacture handrails according to your needs!

Handrail, type G (standard)								
	Height	L: 1000 mm	L: 1250 mm	L: 1500 mm	L: 2000 mm	L: 2500 mm	L: 3000 mm	Designs
G-I	960 mm	30.00.10.06	30.00.10.36	30.00.10.07	30.00.10.08	30.00.10.09	30.00.10.10	Knee strap
	1290 mm	30.00.10.11	30.00.10.37	30.00.10.12	30.00.10.13	30.00.10.14	30.00.10.15	
G-II	960 mm	30.00.10.16	30.00.10.38	30.00.10.17	30.00.10.18	30.00.10.19	30.00.10.20	Vertical braces
	1290 mm	30.00.10.21	30.00.10.39	30.00.10.22	30.00.10.23	30.00.10.24	30.00.10.25	
G-III	960 mm	30.00.10.26	30.00.10.40	30.00.10.27	30.00.10.28	30.00.10.29	30.00.10.30	Splash guard
	1290 mm	30.00.10.31	30.00.10.41	30.00.10.32	30.00.10.33	30.00.10.34	30.00.10.35	



Type G-I 1290



Type G-II 1290



Type G-III 1290

Handrail gate (escape route gate), type GT

of rustproof stainless steel 1.4301

Optionally as escape route gate with anti-panic locking system and door guard according to DIN EN 179.

Clear passage width for up to 200 employees according to ASR A2.3.

- Hygienic, cleanly welded pipe profile construction
- Design with vertical braces
- 3 different gate types and clear passage widths available
- Hinge: Opening direction LEFT or RIGHT
- Door handle both sides with knob made of rustproof stainless steel,
- Standard mortise lock without profile cylinder
- Clear gate dimensions 875, 1,000 & 1,200 mm
(special widths on request)
- Standard height: 1,290 mm (special heights on request)



Escape route gate, type GT-type III, right-hand hinge

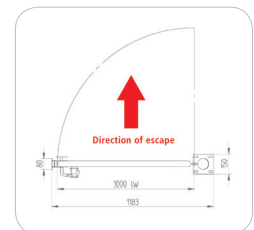
Handrail gate, type GT; H: 1,290 mm					
Clear gate dimension	Number of persons*	Hinge	Type I ①	Type II ②	Type III ③
875	up to 5	Left-hand	39.00.10.14	39.00.10.16	39.00.10.18
		Right-hand	39.00.10.15	39.00.10.17	39.00.10.19
1000	up to 20	Left-hand	39.00.10.03	39.00.10.05	39.00.10.07
		Right-hand	39.00.10.02	39.00.10.04	39.00.10.06
1200	up to 200	Left-hand	39.00.10.13	39.00.10.09	39.00.10.11
		Right-hand	39.00.10.12	39.00.10.08	39.00.10.10

*According to german workplace provision for escape routes (ASR-A 2.3)

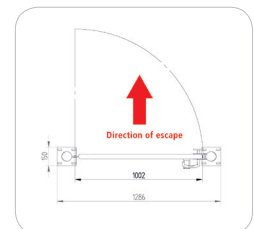
Options:

- Anti-panic-mortise lock (according to DIN EN 179), Article-no. 99.80.01.62
- Door guard with pre-alarm function (splash-water proof), battery supply (9 V), Article-no. 39.00.05.01
- Automatic alarm cut-off for door guard, Article-no. 39.00.05.02
- On request, we manufacture handrails gates according to your needs!

Opening direction:

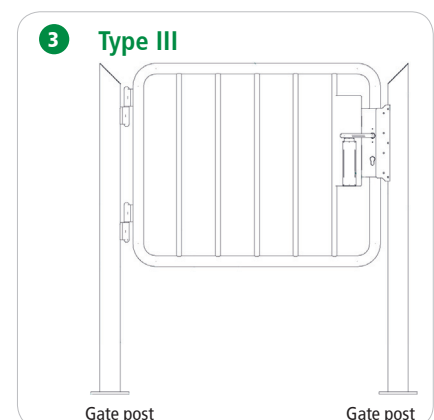
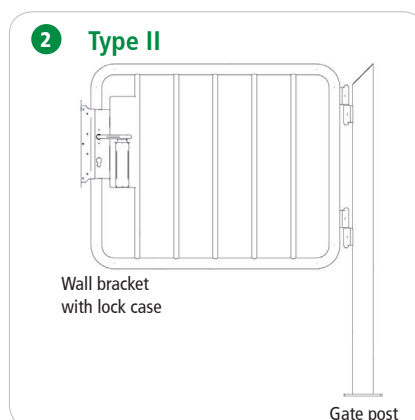
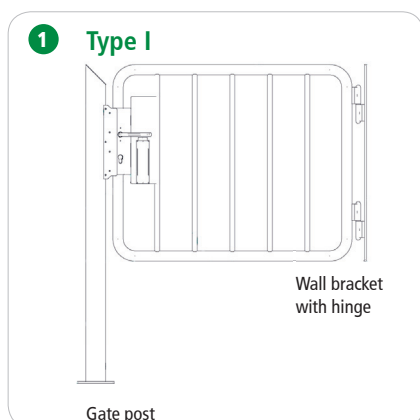


Hinge, right-hand



Hinge, right-hand

Handrail gate designs



Disinfection basin, type DB-E

of rustproof stainless steel 1.4301

For controlled walk-through disinfection of the soles.

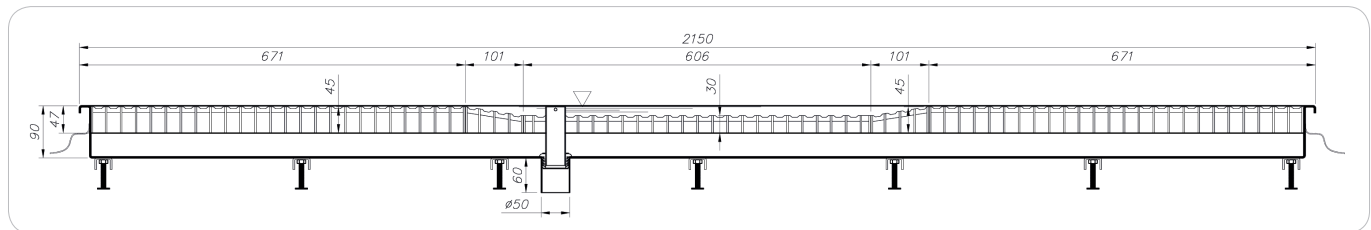
Optionally with 1 or 2 upstream drip trays (DB-E 2/ 3).

- Floor version
- Removable overflow valve
- Removable anti-skid grids
- Other sizes on request



In-floor disinfection basin			
Type	Design	Dimensions L x W x H mm	Article no.
DB-E 1	DB without ATZ	850 x 700 x 90/ 150	65.00.06.06
DB-E 2	DB + 1 ATZ	1500 x 700 x 90/ 150	65.00.06.07
DB-E 3	DB + 2 ATZ	2150 x 700 x 90/ 150	65.00.06.08

Legend: DB = Disinfection basin / ATZ = Drip tray



Sectional drawing, type DB-E 3

Dosing station, type DOS

of rustproof stainless steel 1.4301

Automatic filling and re-sharpening of disinfection basins

- Stainless steel control box, wall hung
- Time controlled by timer (type DOS 1)
- Pulse-controlled by Siemens-Logo-Control (type DOS 2)
- Dosing through integrated system
- Selector switch for manual operation
- Can holder for 10 kg units

Dosing station			
Type	Design	Dimensions W x D x H mm	Article no.
DOS-1	Time-controlled	300 x 150 x 300	65.00.09.04
DOS-2	Pulse	600 x 200 x 400	65.00.09.05



Examples:



Wheel cleaning machine, type RRM

of rustproof stainless steel 1.4301

The wheels are cleaned and disinfected by 4 rotating brush rolls while passing over.

At the same time useable for personal hygiene (sole cleaning)!

- Installation flush with floor
- Load: 2.5 metric tons (higher load on request)
- Sensor-controlled brush roll rotation for both ways
- Dosage of the application quantity adjustable
- Both sides handrails for forced guidance and safe passage of personnel.
- Depending on the lane width, 2 brush lengths available
- Medium connectors on the control box, supply to the machine through empty conduit in the floor structure
- On-site pit required, dimensions depending on brush length

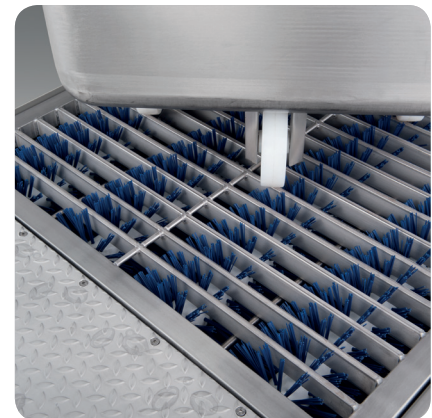


Wheel cleaning machine, type RRM				
Type	Brush length	Track width (vehicles)	Pit size L x W x H mm	Article no.
RRM-I	700 mm	up to 600 mm	1620 x 1620 x 300	10.00.00.58
RRM-II	1100 mm	from 600 mm	2000 x 2000 x 300	10.00.00.59

Technical data: 400 V, 50-60 Hz; 1.2 kW, 3/4" - MW; drain: DN 70

Options:

- Passage control by handrail gate on request
- Detachable handrail for entry of bigger machines on request

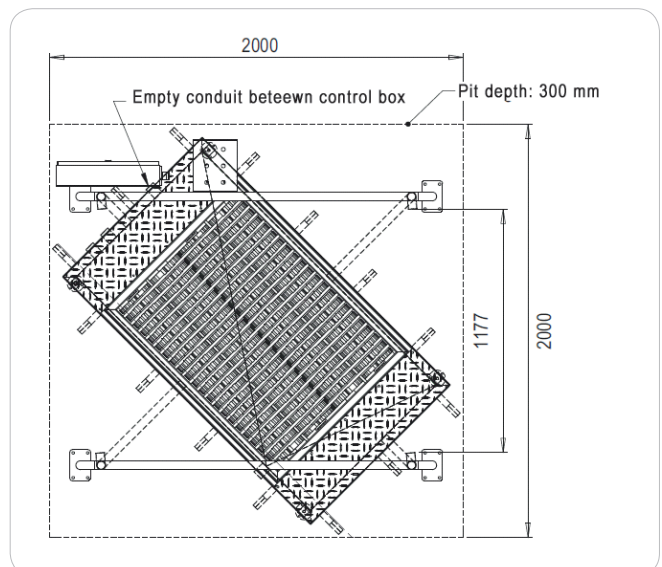


Detail of bath

Installation pre-requisites

On-site base-sized pit for two-stage installation (frame/machine) including floor drainage (fixed connector) according to machine drawing.

- Control box mounting on handrail or wall
- Empty conduit for medium supply between control box (wall) + machine
- Medium connectors on the control box
- Outer tray with sensor pipes to be cast while casting the screed.
- Brush module to be inserted after casting the screed.



Can holder, type KH

of rustproof stainless steel 1.4301

- Hygienic design
- Wall-mounted design
- Stainless steel sheet with draining hole
- 2 different sizes available
- With hygienic corner recesses



Type	Capacity	Dimensions W x D x H mm	Article no.
KH-II	10 kg can	250 x 210 x 200	16.10.00.02
KH-III	24 kg can	350 x 260 x 200	16.10.00.08

Can container, type KB

of rustproof stainless steel 1.4301

- 2 different capacities
- Floor model on 4 feet
- Safe storage
- Enclosed housing with cover and opening for suction hose



Type	Capacity	Dimensions W x D x H mm	Article no.
KB-E	1x 20 litres Can	295 x 330 x 500	16.10.00.03
KB-D	2x 20 litres Can	600 x 330 x 500	16.10.00.04

Document tray, type DA

of rustproof stainless steel 1.4301

- For the support of folders etc. during the hygiene process
- Wall-mounted or attached to the machine
- Wire basket or perforated-sheet metal
- Handrail mounted with pipe clamps (type DA-II)
- Machine mounted with optional consoles (type DA-I)



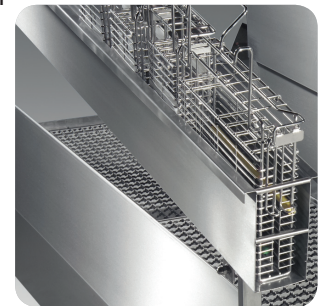
Type	Design	Dimensions W x D x H mm	Article no.
DA-I	Wire-mesh basket	365 x 320 x 50	18.00.00.92
DA-II	Perforated sheet metal	400 x 300 x 50	18.00.00.93

Option: Consoles for type DA-I, Article no. 18.00.00.59

Knife basket chute, type MKRU

of rustproof stainless steel 1.4301

- Hygienic design
- Length: 2000 mm
- Mounted with pipe clamps
- With end stop
- Special lengths on request



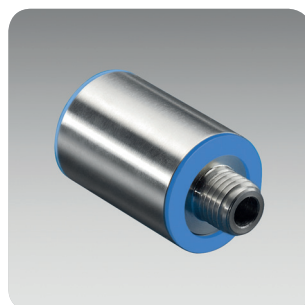
Type	Mounting	Dimensions W x D x H mm	Article no.
MKRU-2000	Pipe clamps	2000 x 160 x 200	99.80.01.41

HD-wall spacers, type HD-WA

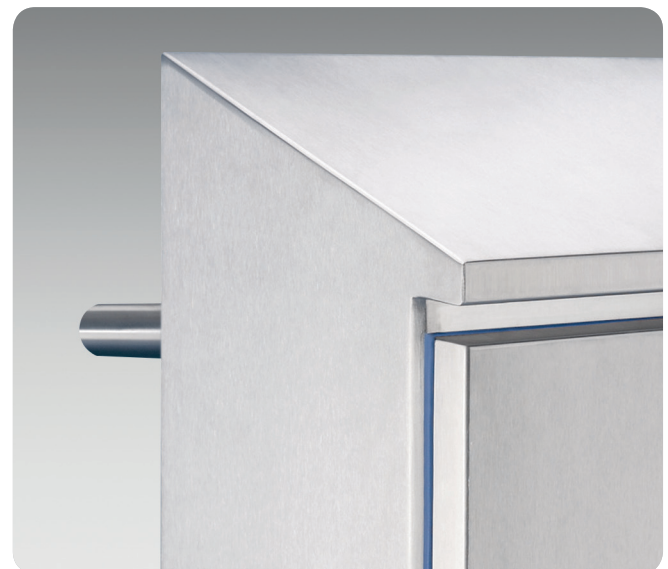
of rustproof stainless steel 1.4301

Provides space for the cleaning behind the housing as well!

- Hygienic design
- Massive solid steel
- Length: 50 mm
- Thread size: M 10
- Diameter: 34 mm



Type	Mounting	Dimensions L x Ø mm	Article no.
HD-WA 50	Bolting	50 x 34	99.80.06.00



ECOLAB® Cleaning agent

Food safety is the top target and is certainly not up for discussion. From experience, the physical intervention of the operating staff in production and its environment is the main cause for the contamination of foodstuffs. **For this reason, personal hygiene is a decisive factor in hygiene management.**

For safe and unobjectionable results with our personal hygiene systems we recommend to use cleaning agents of our partner **Ecolab**.

The recommended **Ecolab** products have been developed by professionals for professionals and in combination with MOHN personal hygiene systems achieve optimal results in all fields of application offering customer-specific solutions for most different object conditions. The product line consists of the small hand washing station with washbasin up to compact hygiene control points in which within a short time a large amount of operating personnel can simply and safely carry out all necessary and prescribed hygienic measures.



The success of personal hygiene is largely dependent on user acceptance. **Ecolab** supports customers in the implementation offering, among other things, hygiene training, hand hygiene and skin protection plans as well as posters with easily understandable pictograms on personal hygiene.

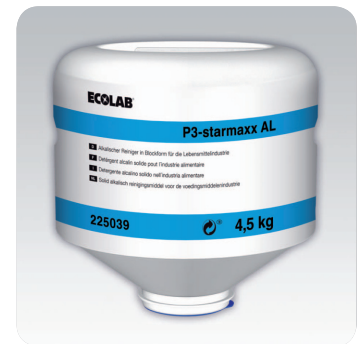
Achieve safe and efficient results as well as optimised operation processes by means of innovative technologies and the unique expertise of our partner **Ecolab**. Please get in contact with **Ecolab** in order to find out more about possible support measures..

NOVELTY: STARMAXX

The STARMAXX System consists of a highly concentrated block cleaner (capsule) and an automatic dosing unit. The compact Starmaxx block cleaner replaces large-volume liquid cleaners.

- The yield of several 20 litres cans concentrated in a 4.5 kg capsule
- High operational safety by block cleaners and controlled dosage
- Easy handling due to compact package
- Reduced expenditure for the product change in the hygiene control point.
- Reduced weight and little disposable expenditure
- Reduced warehousing and less storage facilities in comparison with liquid products.

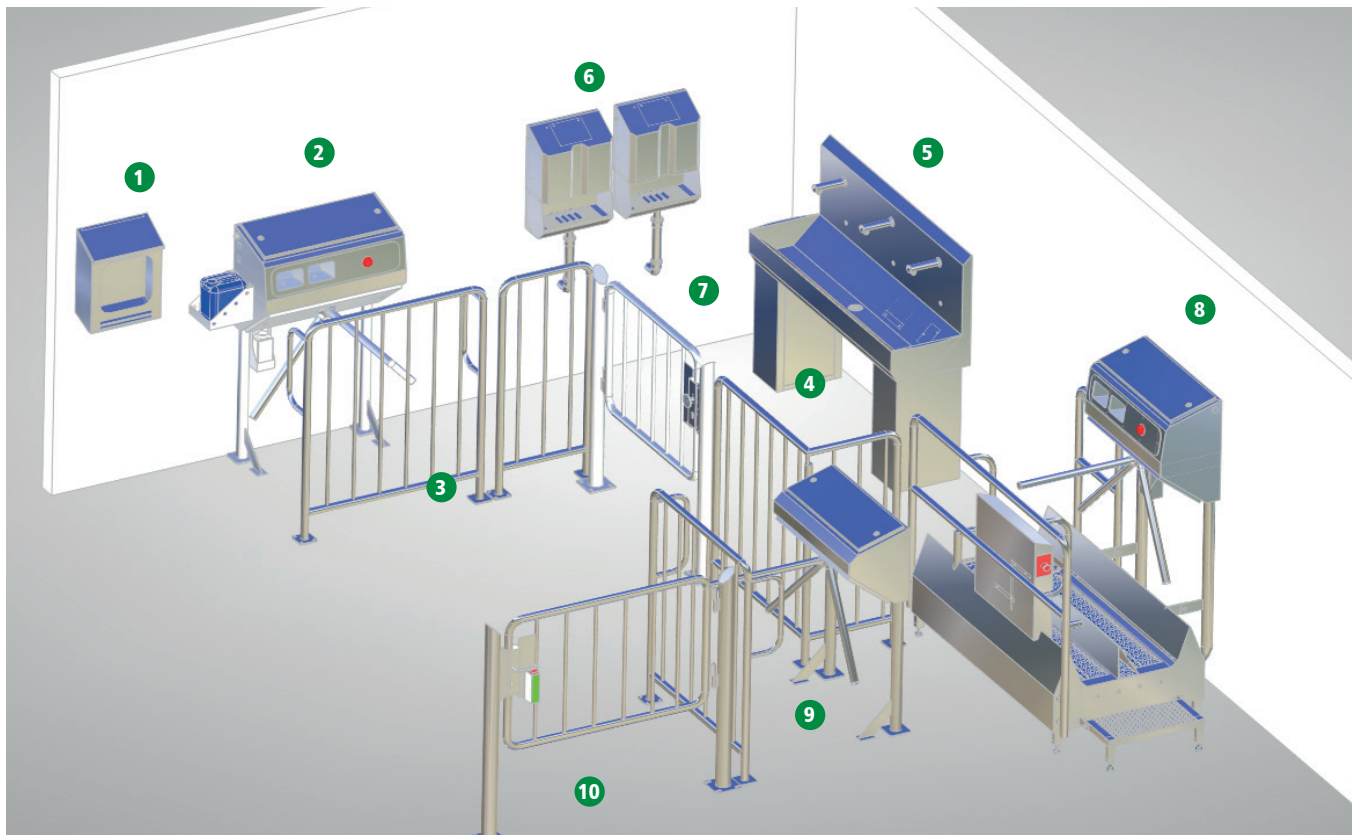
The concept guarantees highly efficient, secure and sustained cleaning performance.



Contact data: Ecolab Deutschland GmbH, 40789 Monheim am Rhein, Germany
Phone: +49 (0) 2173-5991-888, Email: ee-technik-de@ecolab.com

Starmaxx can be retrofitted in already installed hygiene control points!





1 Hairnet / mask dispensers
see page 9

2 Soap-Control Highline
see page 14

3 Handrail with chicane, type G-S
see page 30

4 Handrail, type G II-1290
see page 30

5 Multiple hand wash basin, type WR-SR 3
see page 5

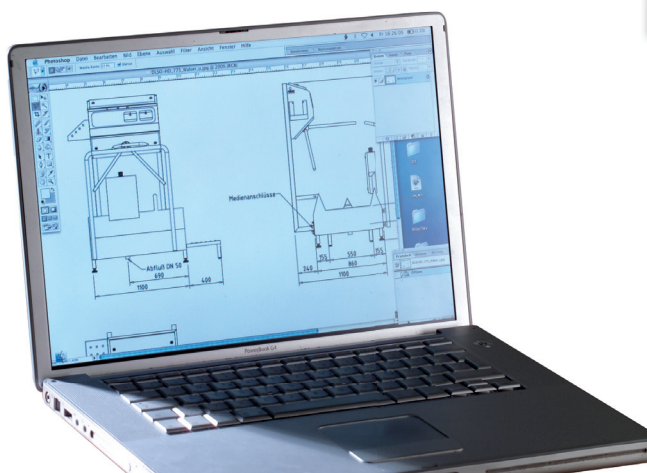
6 Hand drier, type Jet II
see page 7

7 Escape route handrail gate, type GT-1000
see page 31

8 Clean-Check 1500 Highline
see page 20

9 Turnstile Highline, type DK-M
see page 28

10 Escape route handrail gate, type GT-1200
see page 31



Project planning

We examine spatial conditions on-site and include them in our brainstorming. From conception to planning and presentation of sophisticated solutions to complete cost overview - you can rely on our professional services.

We are pleased to directly contact your architect and design in digital CAD format on request.

**We also like to face new challenges-
make use of our competence!**

MOHN competencies:

Hygiene Technology



Cleaning Technology



Drainage Technology



Changing Area Equipment



Factory Equipment



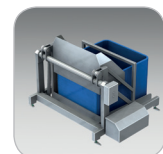
Smoke Trolleys



Containers - Trolleys



Machines



Doors



Bank on our professionalism - please talk to us!

The earlier we come together, the better. Benefit from our innovative hygiene solutions by means of which brilliant times will begin in your company. With MOHN as a competent and reliable partner at your side it will be no problem for you anymore to adhere to stringent guidelines and requirements.

**We also like to face new challenges -
make use of our competence, please!**



Mohn GmbH
Am Stadion 4
58540 Meinerzhagen
Germany

Phone: +49 (0) 23 54- 94 45-0
Fax: +49 (0) 23 54- 94 45-299

info@mohn-gmbh.com

www.mohn-gmbh.com